



South Australia 2007 figures

number of cases	43
number of deaths	12
incidence/100,000 (ASR* Aust 2001 population)	5.2
mortality/100,000 (ASR* Aust 2001 population)	1.3
risk of developing cancer (by age 75 years)	1 in 277

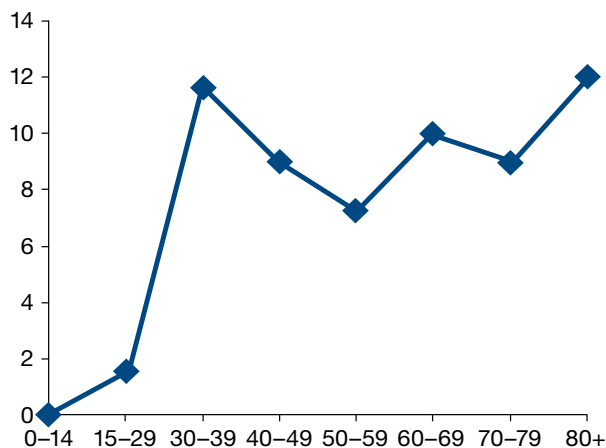
*ASR – Age Standardised Rate

Patterns in incidence and mortality

Age

The rate of cervical cancer in women under 30 is low but increases rapidly after the age of 30 years, remaining relatively high throughout later years in life.

Age specific cervical cancer incidence rates (annual average rate/100,000 1998–2007)



Country of birth

Within South Australia, females born in Germany and Eastern Europe had an elevated incidence in 1977–2000. By comparison, females born in Southern Europe had a lower incidence.

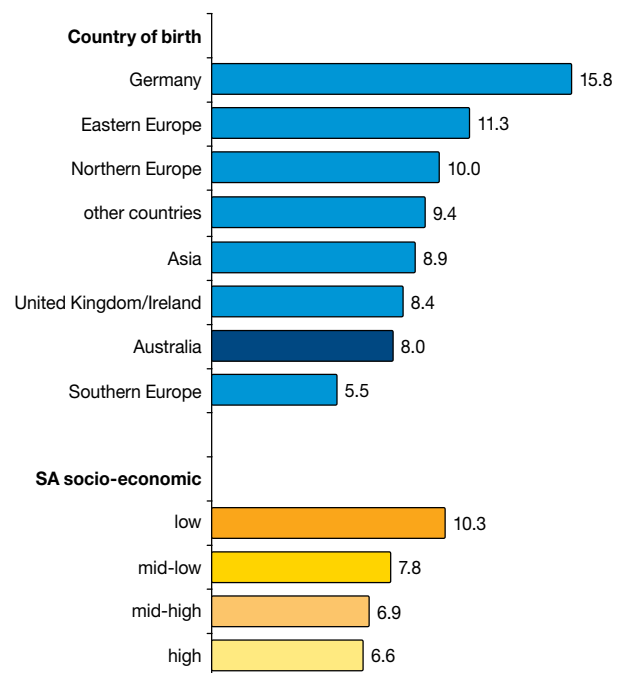
SES/region

During 1977–2001, females residing in low socio-economic areas of South Australia had a high

incidence of cervical cancer. This corresponds with socio-economic gradients in other populations.

The incidence of cervical cancer did not differ appreciably between Adelaide and country regions in general during 1977–2001. Within Adelaide, however, the Western region had a higher incidence than the Eastern region. Although the rate appeared to be higher again in the West Coast, Flinders Ranges and Whyalla, this could have been due to chance.

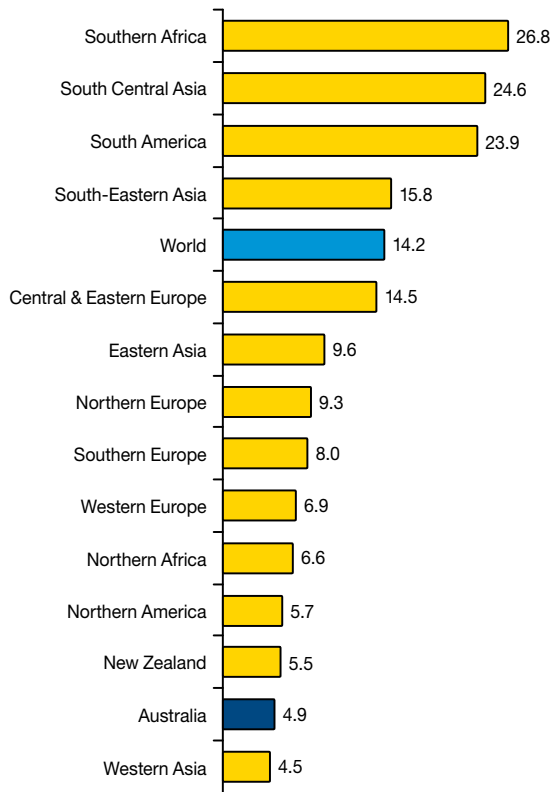
Cervical cancer incidence by country of birth and SES (annual rate/100,000, SA 1977–2001, ASR (World population))



Global comparisons

Australia has a relatively low incidence of cervical cancer compared with most other regions. This is due in part to Australia's National Cervix Screening Program which has led to lower incidence rates through detection and treatment of pre-cancerous lesions. The highest incidence was in Southern Africa.

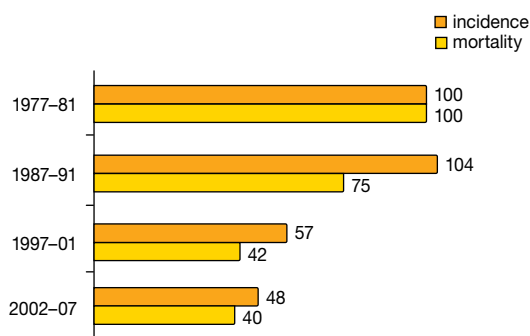
Cervical cancer incidence rate for different regions of the world (rate/100,000 ASR World population, Globocan 2008)



Trends

The incidence of cervical cancer reduced by 52% between 1977–81 and 2002–2007. This is attributed mostly to the detection of precursor lesions through screening, and their early treatment. There was a corresponding reduction in mortality of about 60%.

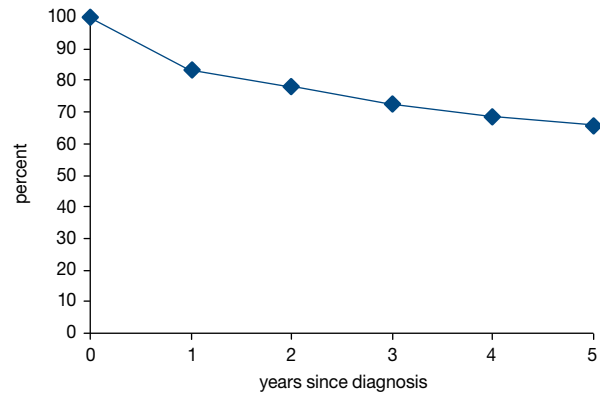
Trends in cervical cancer incidence and mortality rates in SA (rates for 1977–81 set at '100')



Survival

Two thirds of women diagnosed with cancer of the cervix between 1997 and 2003 survived for five years or more after diagnosis (65.7%). This survival rate is similar to the survival rate for women diagnosed between 1977 and 1981 (64.9%).

Survival from cervical cancer SA, 1997–2003



Risk factors

Risk factors include:

- not having regular Pap smears (normally recommended two yearly)
- early commencement of sexual activity
- having multiple sexual partners/a sexual partner who has had multiple partners
- tobacco smoking
- immunosuppression, as may occur from cancer therapy of medical treatment to prevent organ transplant rejection
- persistent HPV infection.

Data sources:

- Cancer Registry reports, South Australian Department of Health
- Globocan 2008, IARC.

September 2010
next review due September 2011